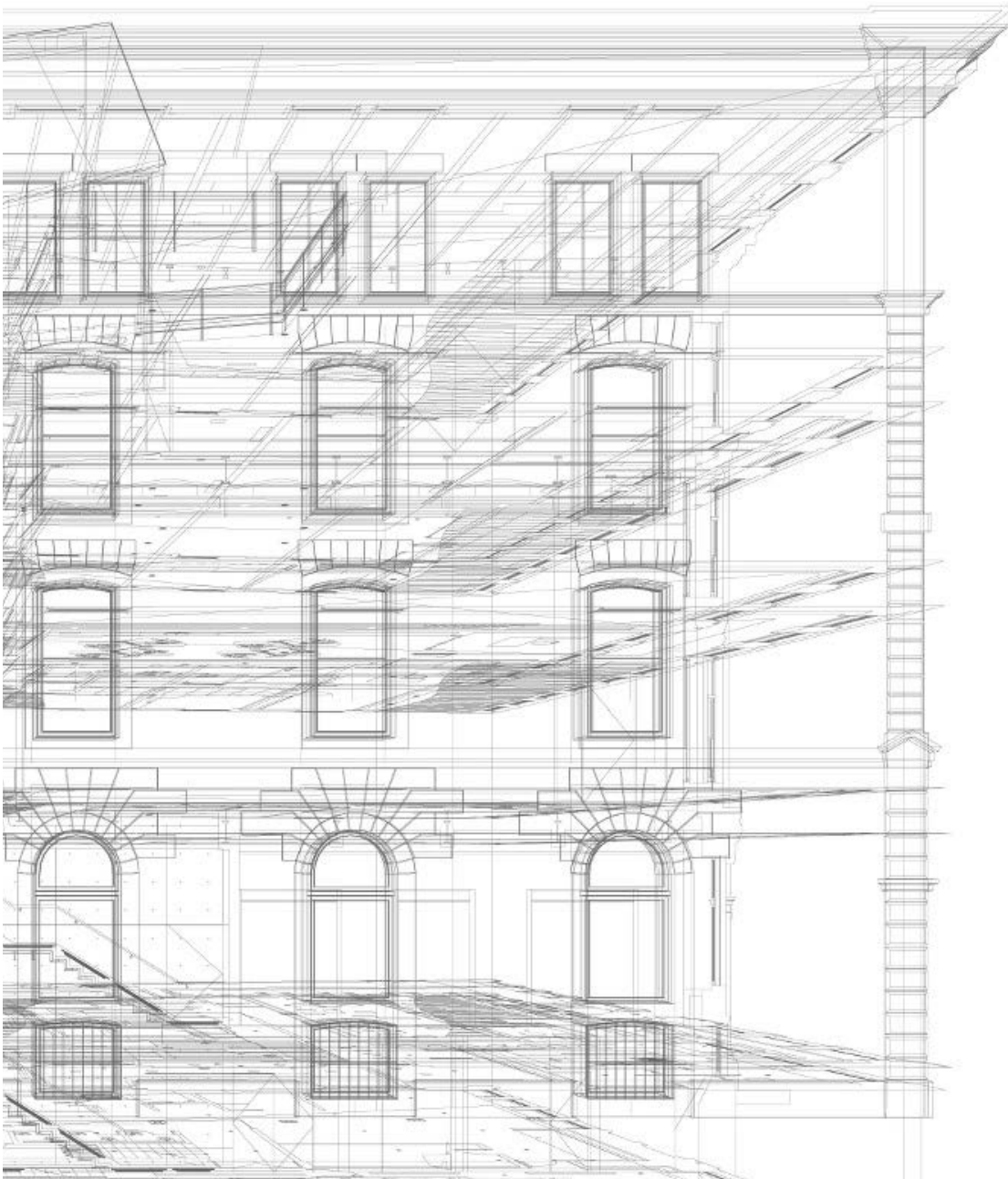


Technical rider  
**Space A**  
January 2017



## Contacts:

### Venues

Simon Bonami

sbonami@phi-centre.com

+1 514 844-7474 (5121)

### Studios

Marc-André Nadeau

manadeau@phi-centre.com

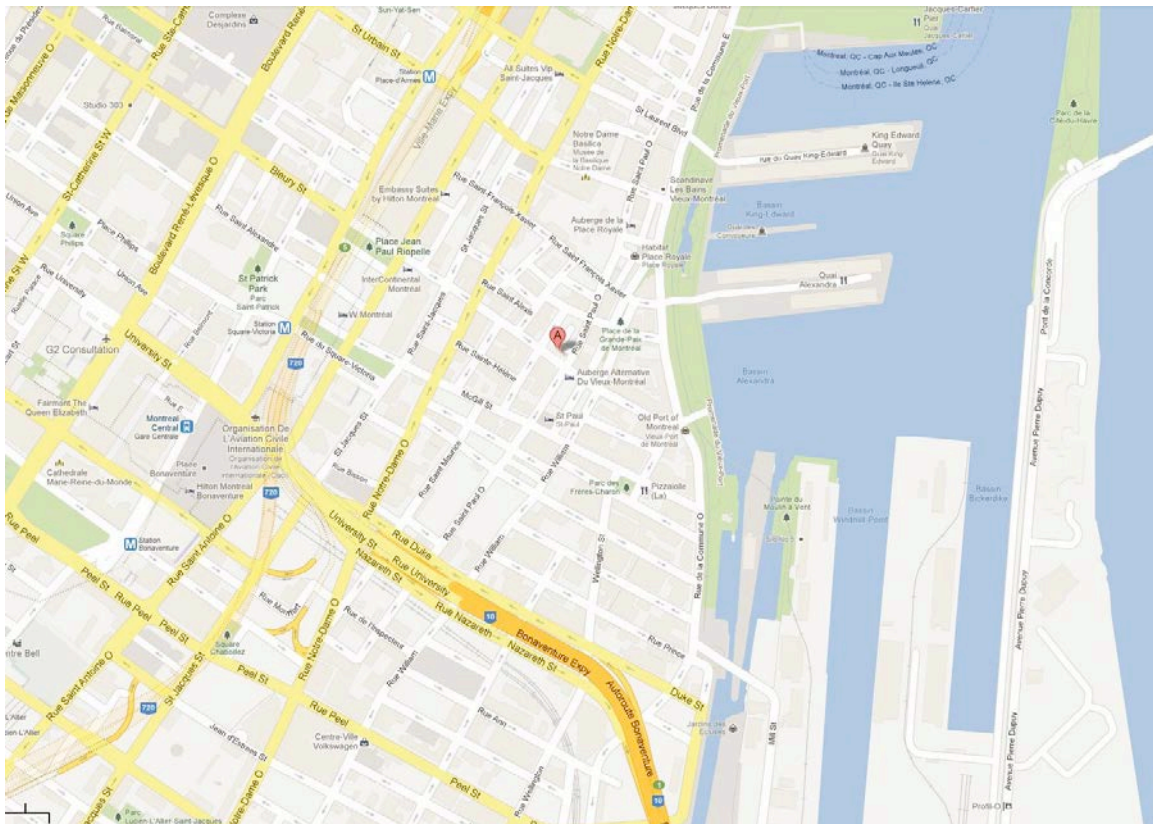
+1 514 844-7474 (5116)

## Map & information

**Main entrance:** 407, rue Saint-Pierre, Montreal, QC H2Y 2M3

**Deliveries:** Evans Ct, Montreal, QC H2Y 2A3

[www.phi-centre.com](http://www.phi-centre.com)



## **Introduction**

Space A is commonly known as « The Theatre ». It's a large, welcoming venue ideal for live performances, conferences or presentations and launches. It's outfitted with a full-size professional bar at ground level and two smaller mezzanines on either sides. The large windows on St-Paul street are covered by opaque acoustic panels which can be removed to expose the splendor of Old Montreal. Access to Space A is through the Lobby, designed with a small vestibule to prevent sound contamination from other ongoing events. The walls are clad with variable-orientation acoustic panels that allow the seasoned user to create unique room acoustics. Thanks to the Phi Centre's inter-connectivity, performances in Space A can be simultaneously broadcast in other spaces in the building, recorded in the Studio or sent out on the Internet.

## **Dimensions**

Please use the latest version of the "Technical Plan" available on our website for the most up-to-date information.

## **Capacity**

Space A has a posted capacity of 440 when cleared of furniture/equipment and 376 when used with a stage. Please note that capacity in Space A is subject to change based on the specific layout and furniture configuration of your event. As with all venues in the building, the Phi Centre reserves the right to amend posted capacity to reflect constraints of a specific setup to ensure a safe and pleasant experience for our guests.

## **Basic configuration**

Please refer to the up-to-date version of the "Room Plan" available for download on our website. Custom configurations are possible but must be organized ahead of time with your assigned event coordinator. Note that staging modules are 1 m x 1.5 m (3'X5').

## **Inter-connectivity**

The Phi Centre's infrastructure offers limitless possibilities. Inter-connectivity patch plates are available throughout the building and link every space together via the central data hub. These patch plates have provisions for digital video and audio feeds, allowing for a full-duplex experience from one space to another, a live digital recording of a performance or a web-cast feed of your event. To learn more about what the Centre's integration can do for you, please speak with the Studio Director.

## **Acoustic Panels :**

The Space walls are composed of reversible acoustic panels which offer two different configurations; a wood finish which reflects sound, and a black finish which absorbs sound. Please discuss with your Technical Director to determine the acoustic configuration that best suits your event. Please note: handling of the acoustic panels is exclusively permitted to the Phi Centre technical team, and one (1) hour is needed to execute changes depending on the chosen configuration.

## **Electricity**

There are 2 tie-in points equipped with a CamLock-type disconnect in the basement, accessible within the Espace Plateau via a cable tray. Please speak with the Technical Director to coordinate your electrical needs.

1 x 208V / 3 phases / 200 amp.

1 x 208V / 3 phases / 100 amp

## **Lighting**

Please refer to the latest revision of the basic hanging plot, available for download on our website. Changes and additions must be discussed with the Technical Director. Steel rigging pipes are rated at 37 kg/linear meter (25 lbs/linear foot) for a uniformly distributed load. Pipes are 1.9" OD. Twist locks circuits are distributed throughout the house.

### **Dimmers:**

68 x 2.4Kw Strand C21

### **Desks:**

MA Command Wing & GrandMA 2 on PC with touch screen interface (available on reservation)

ETC SmartFade 1248

### **Fixtures:**

8 x ETC SourceFour LED Studio HD w/ 36deg lenses

12 x ETC SourceFour Zoom 25°/50° 575W

22 x ETC Parnel 575W

4 x ETC Junior 26° 575W 4 x ETC w/iris

Please ask for our "Rental Equipment" list for all available options.

## **Audio**

### **PA:**

2 x Kling & Freitag Line 212

2 x Kling & Freitag SW 215

### **Front, side or back fill:**

2 x Kling & Freitag CA1001 SP

**Stage monitors:**

2 x Db Technologies DVX DM12

4 x Renkus-Heinz CF121M

**Audio (continued)****Controls:**

Yamaha M7CL 48 desk with Dante cards

**Processor:**

1 x Soundweb BLU-806 Dante

**Cabling:**

Yamaha Stage box RIO 32/24 Dante (stage right)

1 x Veam analog snake 40/10

1 x Veam split box 40/10 3x Veam Outputs

**Microphones:**

6 x Shure SM 58

1 x Neumann KMS 104

2 x Shure SM 57

4 x Sennheiser e908 b

1 x Sennheiser e901

6 x Sennheiser e945

1 x Sennheiser e902

2 x Sennheiser MK4

4 x Sennheiser e904

2 x Sennheiser MD 421

2 x Sennheiser e905

2 x Sennheiser 441

2 x Sennheiser e906

2 x Neumann KM 180

**Direct Box:**

5 x Radial JDI

2 x Radial Pro AV/2 2 x JPC

5 x Radial Twin Isolator stereo box

**Mic Stands:**

12 x tall  
9 x short  
2 x Atlas

**Video**

1 x Christie DHD555-GS  
1 x motorized projection screen Draper Access Series E 4.06m x 2.29 m  
(160"x90") front projection  
1 x Blu-Ray Denon DBP-2012UDCIP (stage right)  
1 x video switcher Kramer VP-728 (stage right)

**Video Files, formats, and Codecs**

Venue A is not equipped with a DCP server. All media and files must be tested and approved by the Phi Technical team BEFORE being broadcasted to the public. Digital content must be sent to Phi at least one week before the screening date. Phi Centre observes the right to refuse any content it judges doesn't comply with industry standards.

The following parameters should absolutely be respected to ensure the quality of audio and video playback :

Video Codec : H.264  
Frame rate : 24, 25, or 30 FPS (Constant)  
Bit rate :  
2,000 – 5,000 kbps (SD)  
5,000 – 10,000 kbps (720p HD)  
10,000 – 20,000 kbps (1080p HD)

Audio Codec : AAC-LC (Advanced Audio Codec) Data rate : 320 kbps  
Sample rate : 48 kHz

## **Restrictions**

The use of any and all type of fasteners (screws, nails, double-sided tape, etc.) is prohibited throughout the building. Since the Centre is classified as historic, the use of proscribed fasteners will result in reparation and restoration charges. The use of pyrotechnic effects, naked flames, confetti and sticker distribution are strictly forbidden at all times throughout the Phi Centre.

## **Loading/Unloading**

Deliveries should be directed to the Evans Court alley on St-Paul street, right before the corner of St-Pierre. Cube trucks up to 16' can access the alley only. Any longer vehicles will need to unload from Saint-Paul street. All truck movements must be coordinated with the Technical Director. No vehicles may remain in the alley without its driver present at all times, as neighbouring residents and businesses rely on access to the alleyway. Vehicles must be parked off premises once unloaded.

## **Storage**

There are no storage or staging areas at the Phi Centre for empty and dead cases. Storage must be achieved within the venue space or arranged off-premises. Please discuss this constraint with the Technical Director to avoid last minute fees and inconveniences. All deliveries and pick-ups must take place on the day of the event.

## **Hospitality**

A green room and two dressing rooms are available on the 3rd floor, accessible either by the stairs or the elevator. These rooms are not exclusive to any venue and must be reserved ahead of time if needed. Please speak with your assigned event coordinator to ensure availability. Fees may apply.