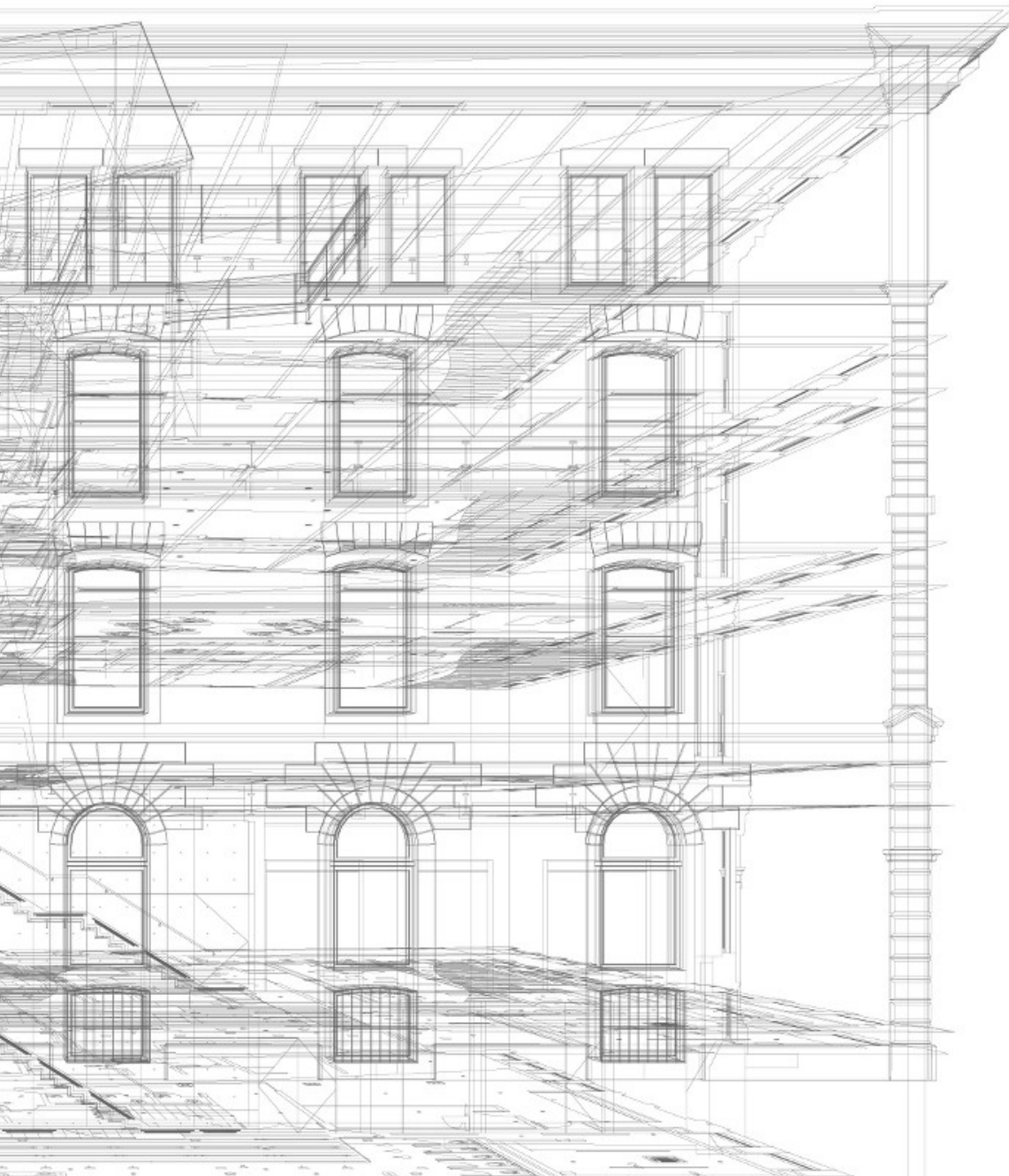


Technical Rider  
Space D – Grand Salon  
February 2018



## Contacts

### Technical Director

Michaël Lefebvre

mlefebvre@centre-phi.com

+1 514 844-7474 (5121)

### Studios and Technology Director

Marc-André Nadeau

manadeau@centre-phi.com

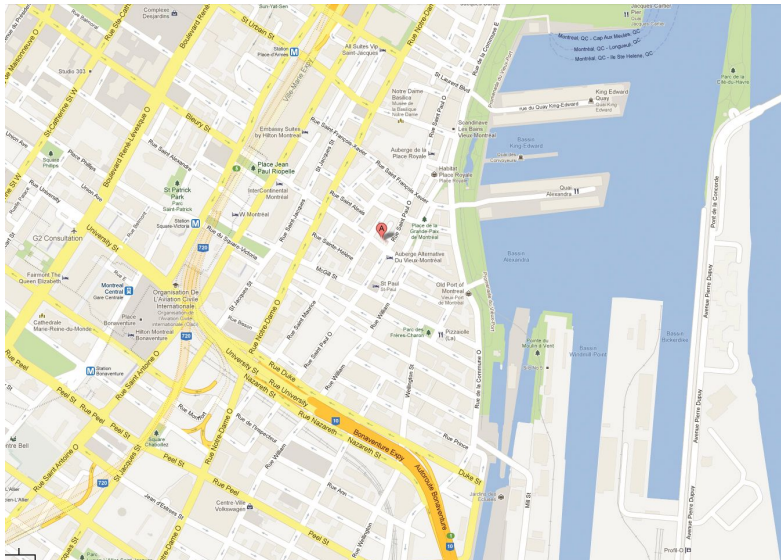
+1 514 844-7474 (5116)

## Map & Information

**Main Entrance:** 407 Saint-Pierre Street, Montreal, Quebec H2Y 2M3

**Deliveries:** Evans Ct, Montreal, Quebec H2Y 2A3

[www.phi-centre.com](http://www.phi-centre.com)



## **Introduction**

Space D – or “ the Grand Salon” – is an open-plan space on the fourth floor of the Phi Centre. Its large windows overlook the historical surroundings of Old Montreal and can be blacked out on request, making the space ideal for standing cocktails and seated video projections. Hanging steel pipes travel through the venue and allow rigging positions to meet the most demanding needs. Its integrated 15-speaker PA system can be configured for all types of uses.

## **Dimensions**

Please use the latest version of the Technical Plan available on our website for the most up-to-date information.

## **Capacity**

Space D has a capacity of 266 people. As with all venues in the building, the Phi Centre reserves the right to amend posted capacity to reflect constraints of a specific setup to ensure a safe and pleasant experience for our guests.

## **Basic Configuration**

Please ask for the up-to-date version of the Room Plan. Custom configurations are possible but must be organized ahead of time with your assigned event coordinator.

## **Interconnectivity**

The Phi Centre's infrastructure offers many possibilities. Interconnectivity patch plates are available throughout the building and link every space together via the central data hub. These patch plates have provisions for digital, video and audio feeds, allowing for a full-duplex experience from one space to another, a live digital recording of a performance, a webcast feed of your event and now, a connection to the Quartier des spectacles' fibre-optic network. To learn more about what the Centre's interconnectivity can do for you, please speak with the Studios and Technology Director.

## **Electricity**

There are no electrical tie-ins available in Space D other than the built-in capacity. Please speak with the Technical Director to ensure electrical needs are addressed before your event.

## **Lighting**

Use of LED-type lighting fixtures is mandatory in Space D. No traditional lighting fixtures can be hung on the grill. There are various ceiling-mounted and wall-mounted DMX patch plates for easy installation. Please speak with the Technical Director if you intend to bring your own lighting equipment.

**Desk:**

ETC SmartFade 1248

**Fixtures:**

4 x ETC Source Four LED StudioHD w/25-50 degrees lens

14 x LCG Dice RGBWAUv (House lights only, subject to changes.)

Please ask for our equipment rental document for more options.

**Audio****PA System:**

12 x Meyer MM4 powered speakers

3 x Meyer MM10 powered subs

1 x Yamaha MTX5-D Multifunction matrix processor

Please ask for our equipment rental document for more options.

**Video****Projector:**

Christie HD10K – M 10,000 lumens/HD 1080p

**Switcher:**

Kramer VP-774 HDMI / VGA / HDSDI / HD-BaseT

**Screen:**

DRAPER ACCESS motorized front projection screen 3.55 m x 2 m (11'-8" x 6'-6") /

16:9

Please ask for our equipment rental document for more options.

## **Restrictions**

The use of any and all types of fasteners (screws, nails, double-sided tape, etc.) is strictly regulated throughout the Phi Centre. Since the building is classified as historic, the unauthorized use of fasteners will result in reparation and restoration charges. The use of pyrotechnic effects, naked flames, confetti and the distribution of stickers are strictly forbidden at all times throughout the Phi Centre.

## **Loading/Unloading**

Deliveries should be directed to the Evans Court alley on St-Paul Street, right before the corner of St-Pierre. Only cube trucks measuring up to 16' can access the alley. Any longer vehicles will need to unload from St-Paul Street. All truck movements must be coordinated with the Technical Director. No vehicle may remain in the alley without its driver present at all times, as neighbouring residents and businesses rely on access to the alleyway. Vehicles must be parked off premises once unloaded.

## **Storage**

There are no storage or staging areas at the Phi Centre for empty and unused cases. All equipment must be stored within the venue space, or storage arranged off premises. Please discuss this restriction with the Technical Director to avoid last-minute fees and inconveniences. All deliveries and pick-ups must take place on the day of the event.

## **Hospitality**

A green room and two dressing rooms are available on the third floor, accessible either by the stairs or the elevator. These rooms are not exclusive to any venue and must be reserved ahead of time if needed. Please speak with your assigned event coordinator to ensure availability. Fees may apply.